

# JW

## John Worley Builders, Inc.

### Est. 1976

Building Luxury Homes in Collierville and Germantown Tennessee

Since 1976 the Worley Builders team has been dedicated to building our customers' dream homes. Our goal is to meet your needs and exceed your expectations...time and time again.

## Braystone Park

Worleybuilders.com

Homes Marketed By:



## John Green & Co.

REALTORS®

108 E. Mulberry St. • Collierville, TN

Johngreen.com

901-853-0763

Allen Green • 412-2998 or Michael Green • 412-3008

allen@johngreen.com

michael@johngreen.com

Rev. 10/27/08

# JW

John Worley Builders, Inc.

## Braystone Park

1428 Brayhill Cv.	Lot 128	Plan 2641-1965-807-fc	SOLD
1252 Brayridge Cv.	Lot 130	Plan 3194-1754-919-fc	SOLD
1240 Brayridge Cv.	Lot 131	Plan 2941-1495-985-fc	\$599,900

### Neighborhood Amenities

Swimming Pool

Tennis Courts

Walking Trails

Private Soccer Fields

Neighborhood Association Fees: \$975 Annually

Worleybuilders.com



## John Green & Co.

REALTORS®

108 E. Mulberry St. • Collierville, TN

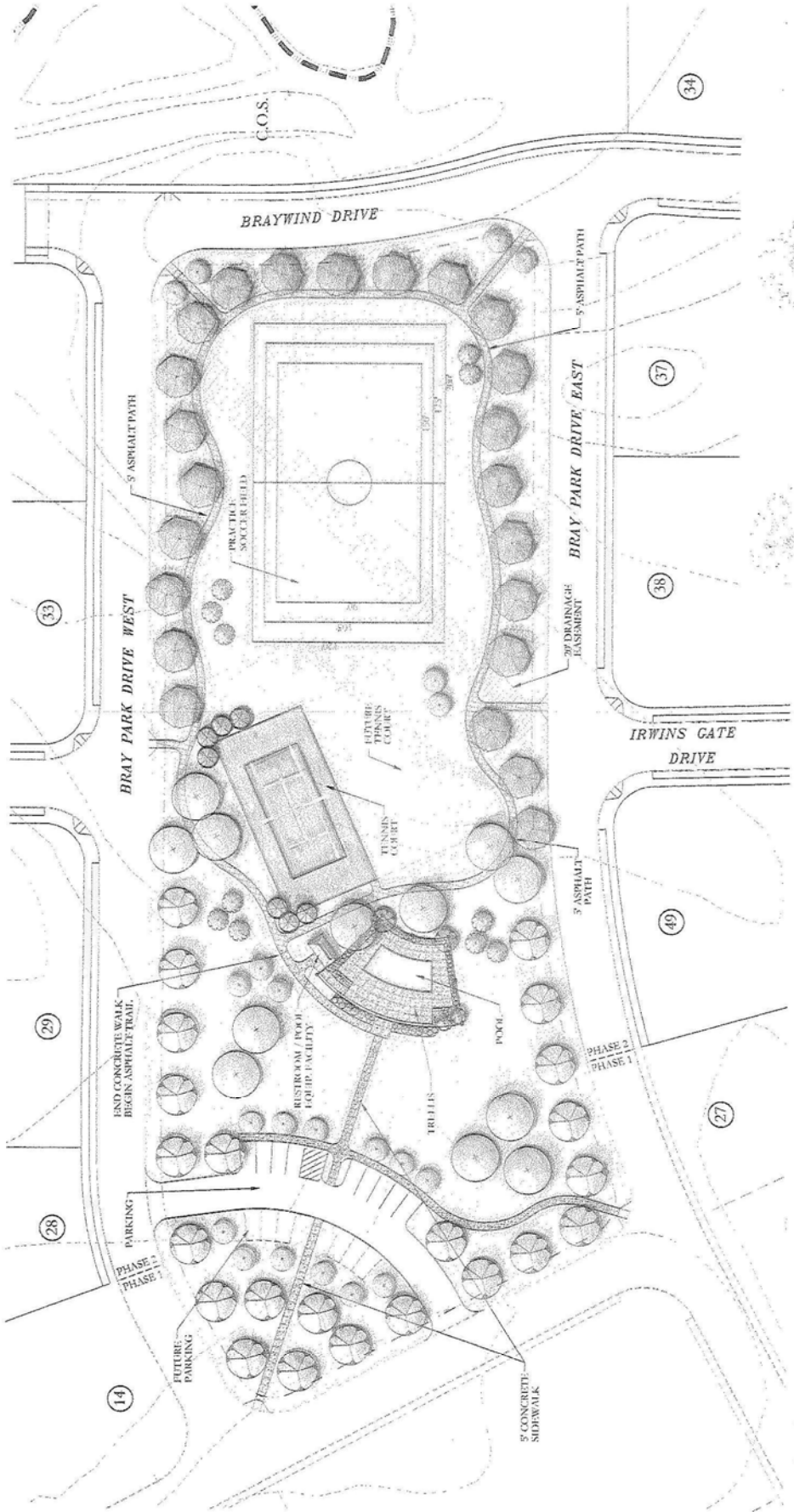
901-853-0763

Allen Green • 412-2998 or Michael Green • 412-3008

allen@johnngreen.com

michael@johnngreen.com

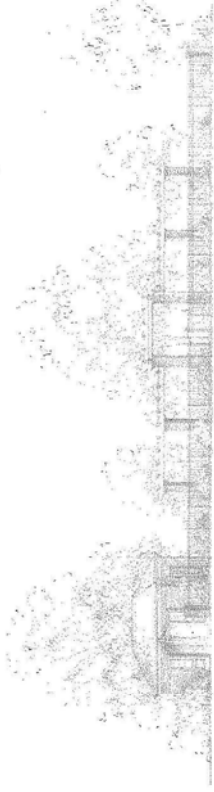
DATE	DESCRIPTION



1 OVERALL SITE PLAN  
SCALE 1/32"

OVERALL SITE PLAN  
NEIGHBORHOOD PARK  
**BRAYSTONE PARK**  
COLLIERVILLE, TENNESSEE

2 POOL HOUSE AND TRELLIS ELEVATION  
R.15.



PROPERTY AND TOPOGRAPHIC INFORMATION PROVIDED BY OWNER IS ASSUMED TO BE ACCURATE. DESIGNER MAKES NO WARRANTY AS TO THE ACCURACY OF ANY INFORMATION PROVIDED. DESIGNER AND OWNER SHALL BE RESPONSIBLE FOR OBTAINING ALL NECESSARY PERMITS AND APPROVALS FROM ALL APPLICABLE AGENCIES. DESIGNER'S RESPONSIBILITY IS LIMITED TO THE DESIGN SERVICES PROVIDED HEREIN.

DEVELOPER:  
**BOYLE INVESTMENT COMPANY**  
5800 POPULAR AVENUE  
MEMPHIS, TENNESSEE 38120

DESIGNED BY: **DALHOFF**  
1400 S. GUYTON AVENUE, SUITE 200  
MEMPHIS, TENNESSEE 38119  
PH: 901.525.1100  
WWW.DALHOFFARCHITECTS.COM

DESIGNED BY: **THOMAS & DAWES**  
1400 S. GUYTON AVENUE, SUITE 200  
MEMPHIS, TENNESSEE 38119  
PH: 901.525.1100  
WWW.THOMASANDDAWES.COM



WILD LIFE PROPERTIES LLC  
 N 292897.2620  
 E 861115.9466

C.O.S.C  
 27 LANDSCAPE EASEMENT  
 (8,520 S.F. / 0.807 AC.)

K.R. HAMMERTON  
 FUTURE R.O.W.

C.O.S.B  
 GATED PAVED EMERGENCY ACCESS  
 (3,000 S.F.)

34' R.O.W. DEDICATION  
 (6,212 S.F. / 1.864 AC.)

WELLINGTON RIDGE SUBDIVISION

SHELTON ROAD (66' PROP. R.O.W.)

BRAYRIDGE COVE

BRAYHILL COVE

BRAY STATION ROAD (66' PROP. R.O.W.)

EX. PUBLIC 20' S.S. ESMT. (P.B. 201, PG. 9)

EX. LANDSCAPE EASEMENT (5,268 S.F. / 0.121 AC.)

EX. UTILITY EASEMENT PER BOOK 1557 PAGE 26

EX. 20' DWN. ESMT. (SEE DETAIL 'K' SHEET 2 OF 3)

EX. STORM WATER DETENTION AREA (P.B. 225, PG. 47) (60,197 S.F.)

EX. 20' DWN. ESMT. (SEE DETAIL 'M' SHEET 2 OF 3)

EX. 20' DWN. ESMT. (SEE DETAIL 'N' SHEET 2 OF 3)

EX. 20' DWN. ESMT. (SEE DETAIL 'O' SHEET 2 OF 3)

EX. 20' DWN. ESMT. (SEE DETAIL 'P' SHEET 2 OF 3)

EX. 20' DWN. ESMT. (SEE DETAIL 'Q' SHEET 2 OF 3)

EX LAKE WSE 313.00

EX LAKE WSE 313.00

EX LAKE WSE 322.49

EX LAKE WSE 322.49

EX LAKE WSE 322.49

EX LAKE WSE 322.49

EX LAKE WSE 322.49

EX LAKE WSE 322.49

EX LAKE WSE 322.49

EX LAKE WSE 322.49

EX LAKE WSE 322.49

EX LAKE WSE 322.49

EX LAKE WSE 322.49

EX LAKE WSE 322.49

EX LAKE WSE 322.49

EX LAKE WSE 322.49

EX LAKE WSE 322.49

EX LAKE WSE 322.49

EX LAKE WSE 322.49

EX LAKE WSE 322.49

EX LAKE WSE 322.49

EX LAKE WSE 322.49

EX LAKE WSE 322.49

EX LAKE WSE 322.49

EX LAKE WSE 322.49

EX LAKE WSE 322.49

EX LAKE WSE 322.49

EX LAKE WSE 322.49

EX LAKE WSE 322.49

EX LAKE WSE 322.49

EX LAKE WSE 322.49

EX LAKE WSE 322.49

EX LAKE WSE 322.49

EX LAKE WSE 322.49

EX LAKE WSE 322.49

EX LAKE WSE 322.49

EX LAKE WSE 322.49

EX LAKE WSE 322.49

EX LAKE WSE 322.49

EX LAKE WSE 322.49

EX LAKE WSE 322.49

EX LAKE WSE 322.49

EX LAKE WSE 322.49

EX LAKE WSE 322.49

EX LAKE WSE 322.49

EX LAKE WSE 322.49

EX LAKE WSE 322.49

EX LAKE WSE 322.49

EX LAKE WSE 322.49

EX LAKE WSE 322.49

EX LAKE WSE 322.49

EX LAKE WSE 322.49

EX LAKE WSE 322.49

EX LAKE WSE 322.49

EX LAKE WSE 322.49

EX LAKE WSE 322.49

EX LAKE WSE 322.49

EX LAKE WSE 322.49

EX LAKE WSE 322.49

EX LAKE WSE 322.49

EX LAKE WSE 322.49

EX LAKE WSE 322.49

EX LAKE WSE 322.49

EX LAKE WSE 322.49

EX LAKE WSE 322.49

EX LAKE WSE 322.49

EX LAKE WSE 322.49

EX LAKE WSE 322.49

EX LAKE WSE 322.49

EX LAKE WSE 322.49

EX LAKE WSE 322.49

EX LAKE WSE 322.49

EX LAKE WSE 322.49

EX LAKE WSE 322.49

EX LAKE WSE 322.49

EX LAKE WSE 322.49

EX LAKE WSE 322.49

EX LAKE WSE 322.49

EX LAKE WSE 322.49

EX LAKE WSE 322.49

EX LAKE WSE 322.49

EX LAKE WSE 322.49

EX LAKE WSE 322.49

EX LAKE WSE 322.49

EX LAKE WSE 322.49

EX LAKE WSE 322.49

EX LAKE WSE 322.49

EX LAKE WSE 322.49

EX LAKE WSE 322.49

EX LAKE WSE 322.49

EX LAKE WSE 322.49

EX LAKE WSE 322.49

EX LAKE WSE 322.49

EX LAKE WSE 322.49

EX LAKE WSE 322.49

EX LAKE WSE 322.49

EX LAKE WSE 322.49

EX LAKE WSE 322.49

EX LAKE WSE 322.49

EX LAKE WSE 322.49

EX LAKE WSE 322.49

EX LAKE WSE 322.49

EX LAKE WSE 322.49

EX LAKE WSE 322.49

EX LAKE WSE 322.49

EX LAKE WSE 322.49

EX LAKE WSE 322.49

EX LAKE WSE 322.49

EX LAKE WSE 322.49

EX LAKE WSE 322.49

EX LAKE WSE 322.49

EX LAKE WSE 322.49

EX LAKE WSE 322.49

EX LAKE WSE 322.49

EX LAKE WSE 322.49

EX LAKE WSE 322.49

EX LAKE WSE 322.49

EX LAKE WSE 322.49

EX LAKE WSE 322.49

EX LAKE WSE 322.49

EX LAKE WSE 322.49

EX LAKE WSE 322.49

EX LAKE WSE 322.49

EX LAKE WSE 322.49

EX LAKE WSE 322.49

EX LAKE WSE 322.49

EX LAKE WSE 322.49

EX LAKE WSE 322.49

EX LAKE WSE 322.49

EX LAKE WSE 322.49

EX LAKE WSE 322.49

EX LAKE WSE 322.49

EX LAKE WSE 322.49

EX LAKE WSE 322.49

EX LAKE WSE 322.49

EX LAKE WSE 322.49

EX LAKE WSE 322.49

EX LAKE WSE 322.49

EX LAKE WSE 322.49

EX LAKE WSE 322.49

EX LAKE WSE 322.49

EX LAKE WSE 322.49

EX LAKE WSE 322.49

EX LAKE WSE 322.49

EX LAKE WSE 322.49

EX LAKE WSE 322.49

EX LAKE WSE 322.49

EX LAKE WSE 322.49

EX LAKE WSE 322.49

EX LAKE WSE 322.49

EX LAKE WSE 322.49

EX LAKE WSE 322.49

EX LAKE WSE 322.49

EX LAKE WSE 322.49

EX LAKE WSE 322.49

EX LAKE WSE 322.49

EX LAKE WSE 322.49

EX LAKE WSE 322.49

EX LAKE WSE 322.49

EX LAKE WSE 322.49

EX LAKE WSE 322.49

EX LAKE WSE 322.49

EX LAKE WSE 322.49

EX LAKE WSE 322.49

EX LAKE WSE 322.49

EX LAKE WSE 322.49

EX LAKE WSE 322.49

EX LAKE WSE 322.49

EX LAKE WSE 322.49

EX LAKE WSE 322.49

EX LAKE WSE 322.49

EX LAKE WSE 322.49

EX LAKE WSE 322.49

EX LAKE WSE 322.49

EX LAKE WSE 322.49

EX LAKE WSE 322.49

EX LAKE WSE 322.49

EX LAKE WSE 322.49

EX LAKE WSE 322.49

EX LAKE WSE 322.49

EX LAKE WSE 322.49

EX LAKE WSE 322.49

EX LAKE WSE 322.49

EX LAKE WSE 322.49

EX. 20' DWN. ESMT. (SEE DETAIL 'K' SHEET 2 OF 3)

EX. 20' DWN. ESMT. (SEE DETAIL 'L' SHEET 2 OF 3)

EX. 20' DWN. ESMT. (SEE DETAIL 'M' SHEET 2 OF 3)

EX. 20' DWN. ESMT. (SEE DETAIL 'N' SHEET 2 OF 3)

EX. 20' DWN. ESMT. (SEE DETAIL 'O' SHEET 2 OF 3)

EX. 20' DWN. ESMT. (SEE DETAIL 'P' SHEET 2 OF 3)

EX. 20' DWN. ESMT. (SEE DETAIL 'Q' SHEET 2 OF 3)

EX. 20' DWN. ESMT. (SEE DETAIL 'R' SHEET 2 OF 3)

EX. 20' DWN. ESMT. (SEE DETAIL 'S' SHEET 2 OF 3)

EX. 20' DWN. ESMT. (SEE DETAIL 'T' SHEET 2 OF 3)

EX. 20' DWN. ESMT. (SEE DETAIL 'U' SHEET 2 OF 3)

EX. 20' DWN. ESMT. (SEE DETAIL 'V' SHEET 2 OF 3)

EX. 20' DWN. ESMT. (SEE DETAIL 'W' SHEET 2 OF 3)

EX. 20' DWN. ESMT. (SEE DETAIL 'X' SHEET 2 OF 3)

EX. 20' DWN. ESMT. (SEE DETAIL 'Y' SHEET 2 OF 3)

EX. 20' DWN. ESMT. (SEE DETAIL 'Z' SHEET 2 OF 3)

EX. 20' DWN. ESMT. (SEE DETAIL 'AA' SHEET 2 OF 3)

EX. 20' DWN. ESMT. (SEE DETAIL 'AB' SHEET 2 OF 3)

EX. 20' DWN. ESMT. (SEE DETAIL 'AC' SHEET 2 OF 3)

EX. 20' DWN. ESMT. (SEE DETAIL 'AD' SHEET 2 OF 3)

EX. 20' DWN. ESMT. (SEE DETAIL 'AE' SHEET 2 OF 3)

EX. 20' DWN. ESMT. (SEE DETAIL 'AF' SHEET 2 OF 3)

EX. 20' DWN. ESMT. (SEE DETAIL 'AG' SHEET 2 OF 3)

# JW

John Worley Builders, Inc.  
Est. 1976

1428 Brayhill Cove  
Lot 128 • Braystone Park  
**SOLD!**



Worleybuilders.com



All information is deemed reliable but not warranted. Floor plans are artist renderings and are subject to change.



## John Green & Co.

REALTORS®

108 E. Mulberry St. • Collierville, TN

901-853-0763

Allen Green • 412-2998 or Michael Green • 412-3008

allen@johnsgreen.com

michael@johnsgreen.com

# JW

## John Worley Builders, Inc.

Est. 1976

1252 Brayridge Cove  
Lot 130 • Braystone Park  
**SOLD!**



Worleybuilders.com



All information is deemed reliable but not warranted. Floor plans are artist renderings and are subject to change.



# John Green & Co.

REALTORS®

108 E. Mulberry St. • Collierville, TN

901-853-0763

Allen Green • 412-2998 or Michael Green • 412-3008

allen@johngreen.com

michael@johngreen.com

# JW

John Worley Builders, Inc.

Est. 1976

1240 Brayridge Cove  
Lot 131 • Braystone Park  
\$599,900

Want to take advantage of low interest rates and great deals but still have a house to sell? Worley Builders Inc. has arranged special financing for qualified buyers. Don't miss out on this once in a lifetime opportunity! Call now for details!



All information is deemed reliable but not warranted. Floor plans are artist renderings and are subject to change.



## John Green & Co.

REALTORS®

108 E. Mulberry St. • Collierville, TN

901-853-0763

Allen Green • 412-2998 or Michael Green • 412-3008

allen@johngreen.com

michael@johngreen.com